

MSVF-8 SMARTBOX® Tandem Rack

SMARTBOX®

The MSVF-8 automates a four-stage euthanasia cycle by controlling flow rate and timing variables. At start of cycle, doors automatically lock and will not unlock until CO₂ evacuation is complete. Stage One secures doors and anesthetizes animals by slowly raising CO₂ concentration. Stage Two automatically adjusts gas flow to bring CO₂ to euthanizing concentrations and continues to complete euthanasia. Stage Three, dwell time, all CO₂ shuts off and utilizes the fully charged chamber to ensure proper euthanasia of all animals. Stage Four evacuates all CO₂, shuts down the system once the chambers are fully purged, and unlocks the chamber doors.

Offers four separate gas levels that are controlled independently. Specific species can be designated for a single level or any combination of levels. Tiers can be programmed and cycles started while other levels are in use. The MSVF-8 increases flexibility to maximize operating efficiency.

The clear polycarbonate doors provide visibility while the front-loading, swing-down design offers easy cage access. Airtight, gasket-sealed doors prevent gas leakage during operation. The manifold design ensures even gas distribution. The system accommodates the full range of rodent cages from all manufacturers. The included cart provides mobility for easy chamber cleaning.

Compliant with AVMA Guidelines

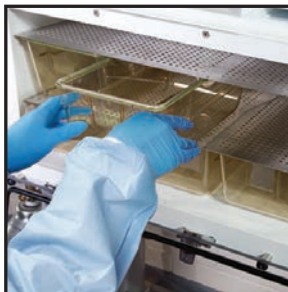
- Accommodates up to 160 shoebox mouse cages or 32 standard rat cages
- Independent level operation increases efficiency
- Interactive control panel facilitates easy training and operation
- Fully automated preset times and flow rates for each species and chamber quantity
- Automation virtually eliminates operator error and conserves CO₂ consumption
- After starting system, technician is free to do other work
- Programs can be customized based on facility requirements
- Password-protected presets ensure only authorized personnel can make program changes
- Electronically monitored safety system prevents operation when chamber door is not properly closed
- Doors automatically lock during operation and unlock after evacuation
- Gas is fully evacuated if system shuts down before cycle completion
- Warning light indicates loss of CO₂ supply



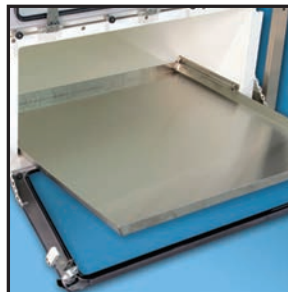
Accessories



EA-6500



EA-1315



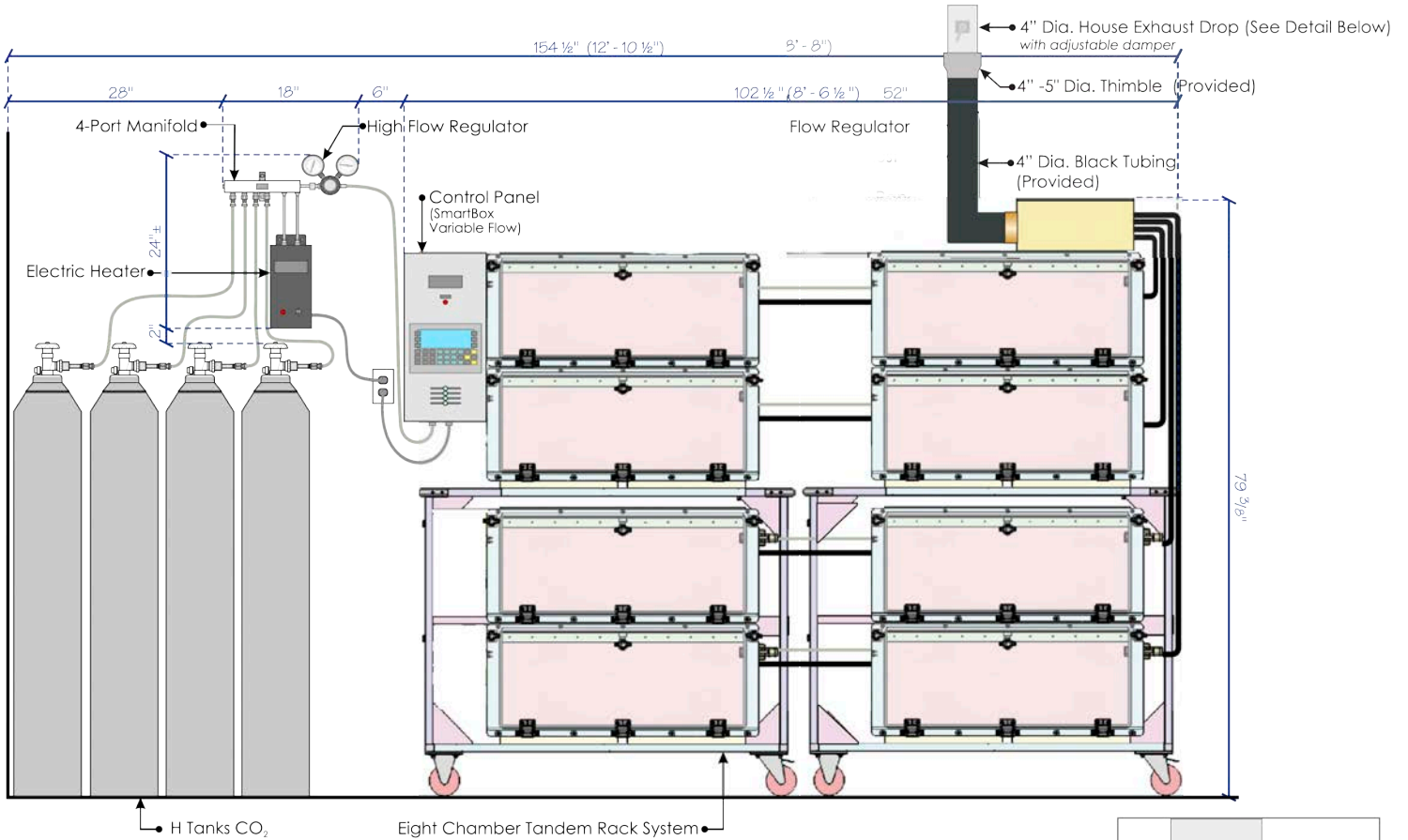
EA-5500



EA-255

*MSVF-8 includes:
SMARTBOX® Side Control
Box, two M1 Chambers,
Exhaust Blower, 8' of 4"
Exhaust Tubing, two 4"
Hose Clamps*

SMARTBOX®



SMARTBOX Auto CO₂ System / MSVF-8

SCALE: 3/4" = 1'-0"

	Co ₂ Line
	Power Cord
	Chamber Exhaust / Vent Line

REQUIREMENTS	
Electric	120V 15 AMP
4" House Exhaust	60 CFM
CO ₂ Supply	30 PSI @ 250LPM

INSIDE CHAMBER DIMENSIONS

32.0" W X 30.5" D X 12.5" H

